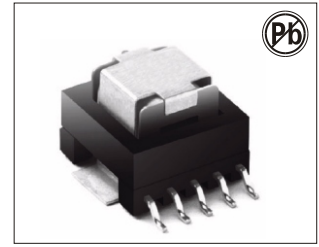


SMT CURRENT SENSE TRANSFORMERS ACSTE12 SERIES



FEATURES:

- Height: 10mm Max
- Footprint: 19.9mm X 15.0mm Max
- Frequency range: 50KHz to 500KHz
- Current rating: up to 40A
- Operating temperature: -40°C to +130°C

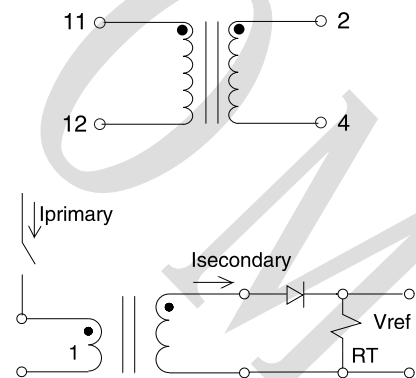
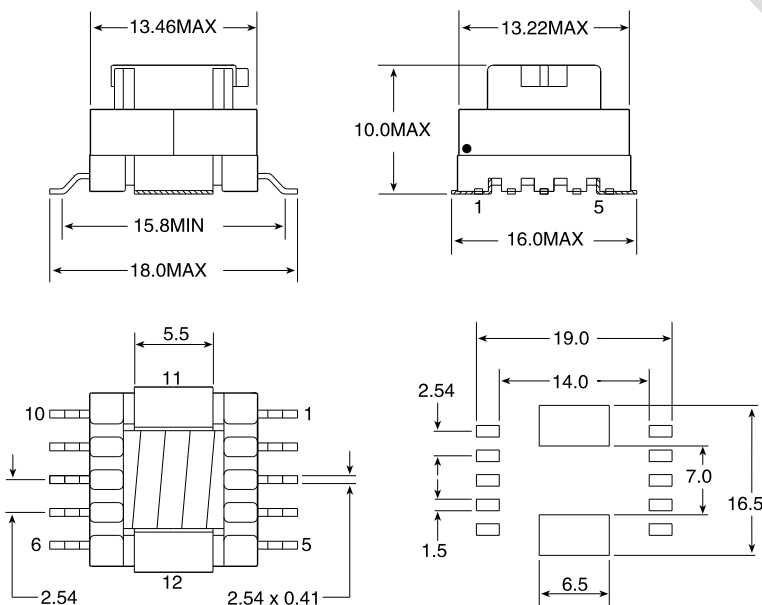
ELECTRICAL CHARACTERISTICS:

Part Number	Turns ratio	Sec. Inductance (mH) 10KHz,0.1V	DCR		Hi-Pot (Vrms)
			Pri (mΩ)Max	Sec (Ω)Max	
ACSTE12-200	1:20	0.34min.	0.36	0.18	500
ACSTE12-300	1:30	0.76min.	0.36	0.265	500
ACSTE12-400	1:40	1.36min.	0.36	0.56	500
ACSTE12-500	1:50	2.12min.	0.36	0.705	500
ACSTE12-600	1:60	3.06min.	0.36	0.85	500
ACSTE12-700	1:70	4.16min.	0.36	1.0	500
ACSTE12-800	1:80	5.44min.	0.36	1.15	500
ACSTE12-101	1:100	8.50min.	0.36	1.45	500
ACSTE12-121	1:125	13.3min.	0.36	1.85	500
ACSTE12-151	1:150	19.2min.	0.36	2.25	500
ACSTE12-201	1:200	34.0min.	0.36	4.06	500

1. The temperature of component (ambient temperature plus temperature rise) must be within the specified operating temperature range.
2. The maximum current rating is based upon temperature rise of the component and represents the DC current which will cause a typical temperature rise of 40°C with no airflow when both one turn windings connected in parallel.

PHYSICAL CHARACTERISTICS & WINDING

Dimension: mm



APPLICATION CIRCUIT

Weight..... 4.7g
 Tray..... 100/tray
 Tape&Reel..... 300/reel

Unless otherwise specified, all tolerances are ± 0.25mm